

LED wall and surface-mounted luminaire - Matt diffuser - direct/indirect distribution

Round LED wall and surface-mounted luminaire, IP40. With a very flat, slightly rounded polycarbonate housing, including anti-theft device and insect protection ring. Housing colour similar to RAL 9003, The time-saving installation is by means of an easy-to-use click-fit system on the luminaire base made of sheet steel. Plug-and-play contact when the luminaire is opened; Housing colour white, similar to RAL 9003; diffuser with matt opal surface made of PMMA, cleaning-friendly. This produces a very homogeneous light in combination with LED individual lenses. Wired ready for connection via 5-pin connection terminal with plug-in contacts. Light Control: netlife easy41; Regiolux Classification: netlife easy; Control signal: Switch; Number of control gear (max): 800W LED; Communication: Wired; Sensor technology: HF - high frequency; Installation height (min/max): 2m to 6m; Monitoring area: max. D=12m; Application: Corridors, Secondary rooms, Garages, Office, Meeting rooms; Function: Motion detection.

CHARACTERISTICS

Order number	21906424180
EAN number	4020863394272
Commodity code	94051140
Certification mark	IP 40, Protection class I, Heat filament test 650°C, F, Indoor, CE
Impact resistance (IK rating)	IK03 (10°C bis 35°C)
Ambient temperatur	ta 10°C to 35°C
Warranty period	5 years

DEEP-LINK

<https://www.regiolux.de/en/article/21906424180>

ELECTRICAL ENGINEERING

Controller	Electronic driver (1 pcs.)
Light Control	netlife easy41
System output	23W
Mains voltage	230V/50Hz
Circuit breakers (inrush current)	21 pieces/B10, 34 pieces/B16, 35 pieces/C10, 57 pieces/C16
Energy efficiency class/light source	C

LIGHTING TECHNOLOGY

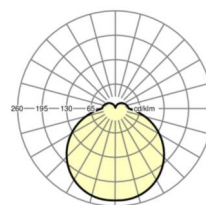
Placement	LED, Colour rendering/Light colour CRI ≥ 80 / 3000K
Colour tolerance (MacAdam)	5SDCM
Nominal luminous flux	2659lm
LED service life	50000h L80/B10 (Tq 35°C)
Luminaire luminous efficiency	118lm/W
UGR lat./long.	22.7 / 22.8

MECHANICS

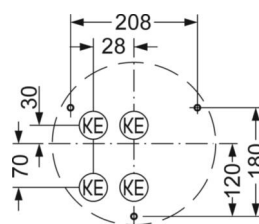
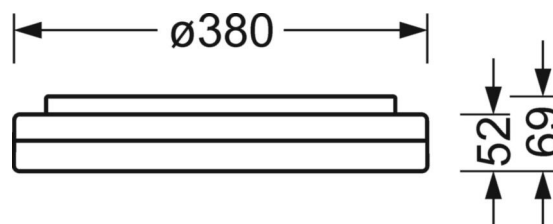
Housing colour	white, similar to RAL 9003
Dimensions (LxWxDxH)	380mm x 69mm
Weight (net)	1.87kg
Cable entry KE	See mounting instructions
Type of installation	Ceiling-mounted single installation, Pendant individual mounting, Wall mounting

Dimensions

H	69 mm	Height
D	380 mm	Diameter
A1	208 mm	Mounting distance single mounting
A1 alternativ	180 mm	Mounting distance single mounting (alternatively)



Reference	LED 2700lm 830
ηLB	100 %
Φ ↓/↑	85 % / 15 %
UGR lat./long.	22.7 / 22.8



LC SYSTEM

CHARACTERISTICS

Regiolux Classification	netlife easy
Control signal	Switch
Number of control gear (max)	800W LED
Communication	Wired
Sensor technology	HF - high frequency
Installation height (min/max)	2m to 6m
Application	Corridors, Secondary rooms, Garages, Office, Meeting rooms
Function	Motion detection

